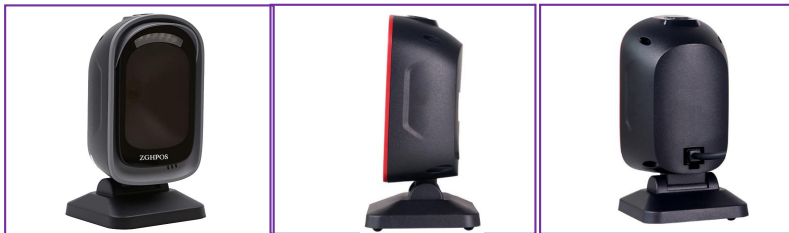




## 2D Image Desktop Barcode Scanner

ZD300 2D image scanner which read 1D and 2D 4mil mobile phone codes and codes printed on paper labels. It is fast scan speed, it reads many different codes and with automatic function.

The ZD300 is also a great choice if you scan predominantly goods which like Medicines, blood test tubes.



### Features

- Super big screen, powerful decode ability, fast scanning 1D/2D.
- Automatic scanning apply from plastics, paper, screen and etc.
- Built-in quick reaction mode, normal mode, phone scan mode and fast 1D mode.
- Multi-language transmission directly

### Characteristics

#### Performance Characteristics

Image(Pixels)	752 pixels (H) x 480 pixels (V)
Light Source	Aiming 617nm LED; illumination: 5600K LED
Field of View	40°(H) x 25°(V)
Roll/Pitch/Yaw	360°, ±65°, ±60°
Print Contrast	20% minimum reflective difference

#### Symbology Decode Capability

1D	UPC, EAN, Code 128, Code 39, Code 93, Code 11, Matrix 2 of 5, Codabar Interleaved 2 of 5, Mis Plessey, GSI DataBar, China Postal, Korean Postal, etc.
2D	QR Code, PDF417, MicroPDF417, Composite Codes, Data Matrix, Maxicode, MicroQR, Aztec.
<b>Decode Ranges</b>	
5 mil(Code 39)	0mm-60mm (Minimum Resolution)
13 mil(Upc-a)	0mm-200mm
<b>User Environment</b>	
Operating Temperature	0°C to 50°C
Storage Temperature	-40°C to 70°C
Humidity	5% to 95%relative humidity,non-condensing
Drop/Shock Specifications	Withstands 10Gs 0.06" double amp
Ambient Light Immunity	Immune to indoor lighting up to 1600 Lux. Immune to sunlight up to 86,000 Lux.
<b>Physical Characteristics</b>	
Dimensions	105mmX146mmX70mm
Weight	200g
Voltage	5V(DC)
Current	400mA (Operating)
Interfaces	USB, RS232 interfaces at option
<b>Warranty</b>	<b>2 years</b>



ZGHPOS

[www.zghpos.com](http://www.zghpos.com)